

MICROSPRINKLER HEAD



These items can be purchased at your local retail outlet.

For information on design set up, you can contact the Agriculture Extension Officer in your parish

FOLLOW US FOR MORE TIPS



ABOUT G-CREWS

The project is jointly financed by the Green Climate Fund (GCF) and the German Federal Ministry for the Environment, Nature Conservation, Nuclear Safety and Consumer Protection (BMUV) under its International Climate Initiative (IKI), and the Government of Grenada.

Over 6 years, the Government of Grenada, the Grenada Development Bank and the National Water and Sewerage Authority (NAWASA) in partnership with the German Development Corporation (GIZ) will implement the project's five components.

PUBLISHED BY

Deutsche Gesellschaft für Internationale Zusammenarbeit (GIZ) GmbH

PROJECT/PROGRAMME

Climate-Resilient Water Sector in Grenada (G-CREWS)

The Carenage, NAWASA Building,
P.O. Box 3269,

St. George's, Grenada WI.

T. +1-473-440-2722 ext.26847

E. marion.geiss@giz.de

I. www.giz.de

I. www.climatefinance.gov.gd

CONTACT

Government of Grenada

Mr. Brian Bonaparte, Project Manager

Department of Economic and Sustainable Development and Planning

Ministry of Economic Development, Planning, Tourism, ICT, Creative Economy, Agriculture and Lands, Fisheries and Cooperatives

T +1-473-435-8889 ext.31127



MICRO SPRINKLER

WHAT IS A MICROSPRINKLER?

Micro-sprinkler irrigation is a low pressure, low to medium volume irrigation system suitable for high value crops.

If managed properly, micro irrigation can increase yields and decrease water use, fertilizer and labour requirements.



HOW DOES IT WORK?

Micro-sprinkler irrigation applies water directly to the soil surface area allowing water to dissipate under low pressure and infiltrate soils in a wetted profile that uniformly meets water demand.

Micro-sprinkler irrigation saves water because of the high application efficiency and high water distribution uniformity. Little if any waste is managed properly.

FACTORS TO CONSIDER IN SETTING UP

OVERLAP

The sprinklers and the micro sprinklers distribute the water in an uniform way, when they are spaced adequately along and between the laterals to allow an appropriate overlap.

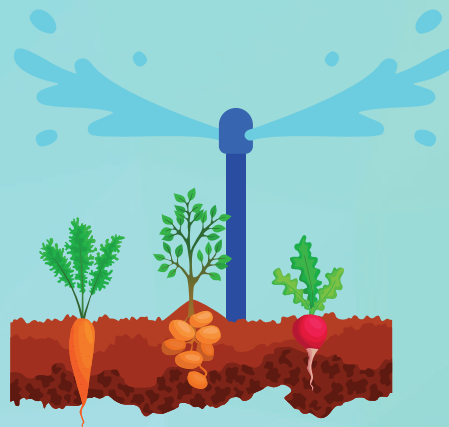
The final parts of the water jet must overlap to provide the same amount of water as the rest of the water jet. The overlap will depend on the characteristics of the sprinkler as well as the working pressure.

PRESSURE

An adequate and uniform pressure will result in the ideal water flow.

Low pressure will be inadequate because it won't give enough water.

If the pressure is too high it will cause a loss of water at the surface (run off).



OPERATION & MAINTENANCE

The micro-irrigation systems are precise and do not waste water, consequently they must always work optimally.

OPERATION

The ease of the micro sprinkler operation allows the farmer to choose the coolest hours for irrigation, e.g. early in the morning or late in the evening.

This will not only reduce the water consumption because of lower evaporation and intense heat but also reduce diseases caused by fungi that develop with humidity and heat.

MAINTENANCE

- Prevent that the flow of water is reduced or interrupted
- Keep the filters clean always
- Make sure there are no obstructions in the pipes
- Check that each micro sprinkler delivers the water in an optimal way and is not clogged